

# Project converter guide

## Migrating from Texas Instruments Code Composer Studio™ to IAR Embedded Workbench® for ARM

Use this guide as a guideline when converting project files from Code Composer Studio and source code written for Code Composer Studio for ARM to IAR Embedded Workbench for ARM.

	Product	Version number
Migrating from	Code Composer Studio	V6.1.3
Migrating to	IAR Embedded Workbench for ARM	V7.70 and newer

### Migration overview

Migration of an existing project from Code Composer Studio requires that you collect information about your current project and then apply this information to the new IAR Embedded Workbench project. In addition, you need to make some changes in the actual source code. The information in this guide simplifies this process.

**Note:** A basic introduction to IAR Embedded Workbench and how to work in the IDE can be found in the *IDE Project Management and Building Guide for ARM* available in the Information Center and on the **Help** menu.

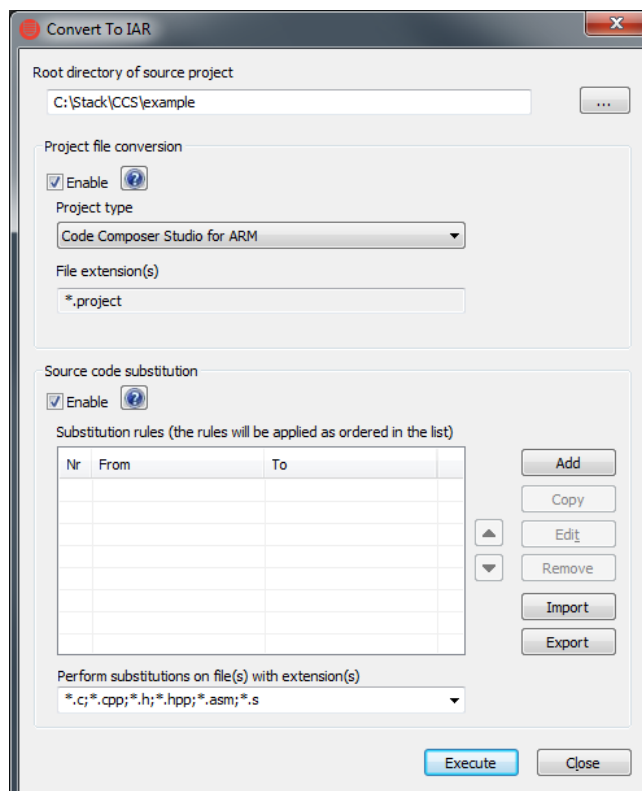
### Project conversion

To migrate existing Code Composer Studio applications to IAR Embedded Workbench there is a tool called **Convert To IAR**. This is a GUI application included with IAR Embedded Workbench, available via the **Tools** menu.

The **Convert To IAR** tool converts Code Composer Studio 6.1.3 project files into IAR Embedded Workbench project files without changing the original files. Information about source files, include paths, defined symbols, and build configuration is transferred. As an additional option, source code substitutions are performed and you can add your own substitution rules, including support for regular expressions. There are a number of predefined substitution rules.

#### Procedure

1. Start IAR Embedded Workbench.
2. Choose **Tools>Project Converter**.
3. Navigate to the top of the Code Composer Studio project directory structure to convert (not necessarily the directory containing the project file) by clicking the browse button.
4. Choose **Code Composer Studio for ARM** as the project type.
5. Click the **Execute** button and a new IAR Embedded Workbench project file will be created.
6. Open the new workspace by choosing **File>Open>Workspace**.
7. Set the relevant project options by choosing **Project>Options**.  
Hint: Open the original project in Code Composer Studio, walk through the options

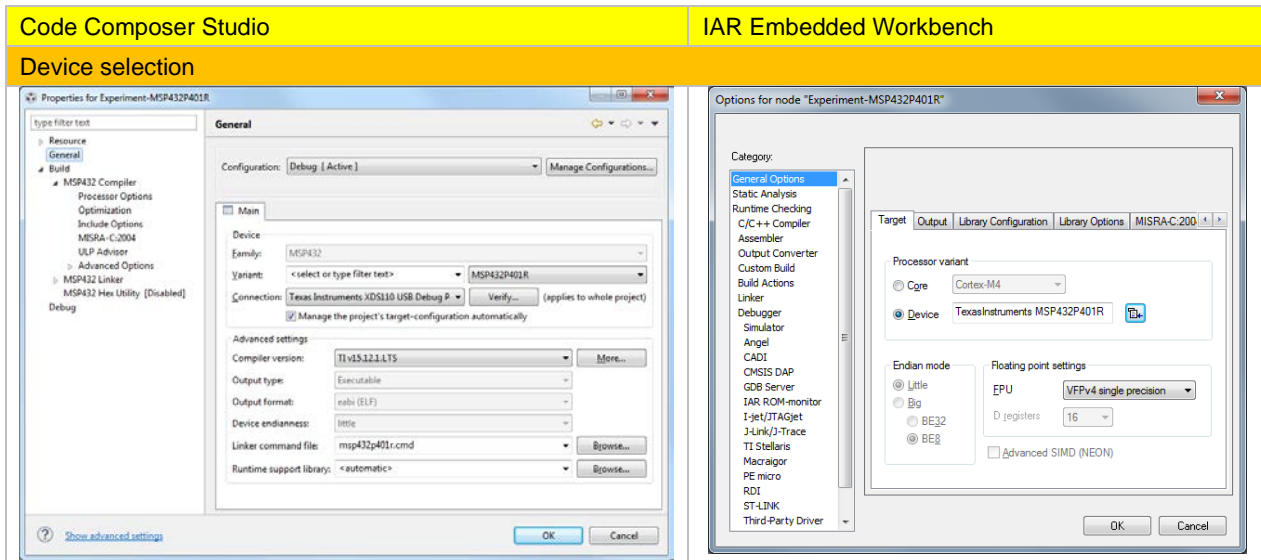


## Migrating from Texas Instruments Code Composer Studio to IAR Embedded Workbench for ARM

and set the corresponding options in IAR Embedded Workbench as suggested in the section *Important tool settings* below.

### Important tool settings

The converter does not transfer all options. You might need to go through some settings manually. One important setting is to select your device.



### Source code migration

C source files that use compiler-specific extensions (like startup code) and assembler source files need to be reviewed and migrated manually. Device-specific startup files are in many cases included in the example projects provided with IAR Embedded Workbench.

### Building your project

After successfully converting the Code Composer Studio project and considering the basic code differences, you will still most likely need to fine-tune parts of the source code so that it follows the IAR Embedded Workbench syntax.

1. Select your device under **Project>Options>General Options**.
2. Choose **Project>Make**.
3. To find the errors/warnings, press **F4** (Next Error/Tag).  
This will bring you to the location in the source code that generated this error/warning.
4. For each error/warning, modify the source code to match the IAR Embedded Workbench syntax.  
Note: You might have to consult the *IAR C/C++ Development Guide for ARM* for this step.
5. After correcting one or more errors/warnings, repeat the procedure.

Note: It is always a good idea to start by correcting the first errors/warnings in different source files, because errors and warnings later in the source code might just be effects of incorrect syntax at the beginning of the source code.

IAR Systems, IAR Embedded Workbench, IAR Connect, C-SPY, C-RUN, C-STAT, visualSTATE, IAR KickStart Kit, IAR Experiment!, I-jet, I-jet Trace, I-scope, IAR Academy, IAR, and the logotype of IAR Systems are trademarks or registered trademarks owned by IAR Systems AB.

All information is subject to change without notice. IAR Systems assumes no responsibility for errors and shall not be liable for any damage or expenses.

© 2016 IAR Systems AB. Part number: EWARM\_MigratingFromCCS-2. Second edition: December 2016